

### IPAAE e-learning portal site is now available!

#### Objectives of IPAAE e-learning

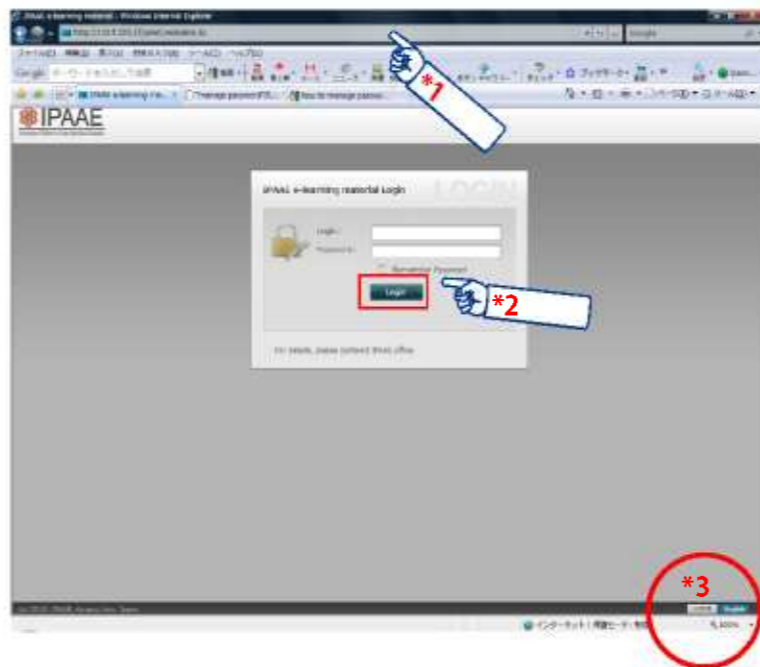
IPAAE aims for a cultivation of students who are capable of pursuing global careers in their future. We also would like to set an international standard for agricultural education in Asia.

In order for us to achieve these goals, we utilize ICT (Information-Communication Technology) materials such as a remote lecture and e-learning system. IPAAE e-learning portal site is established to provide various lectures and seminars recorded with the support of IPAAE collaborative universities.

#### How did we gather up the e-learning materials?

We recorded lectures and seminars using ICT systems mainly at Kyushu University while some lectures were recorded at other universities with sufficient equipment. We also have recordings from video camcorders.

If you have any interest in helping us add more content to the portal site, please contact us at [ipaae@agr.kyushu-u.ac.jp](mailto:ipaae@agr.kyushu-u.ac.jp) or +81-92-642-7159. We very much appreciate your comments and help to further develop our portal site as well.



#### Let's get started!

It involves only a few steps.

##### 1) Register with us.

- ① Go to IPAAE website (<http://www.agr.kyushu-u.ac.jp/ipaae/>) and click on **e-learning**.
- ② After reading through IPAAE e-learning regulations and if you agree, please click on **I agree**.
- ③ Please fill out the email form and send.  
If your default email application does not start automatically, please send us an email ([ipaae@agr.kyushu-u.ac.jp](mailto:ipaae@agr.kyushu-u.ac.jp)) with your first/last (middle) name, university, position, name of supervisor (if you are a student), and email address.
- ④ We will provide you with a User ID and Password once we confirm your identity.

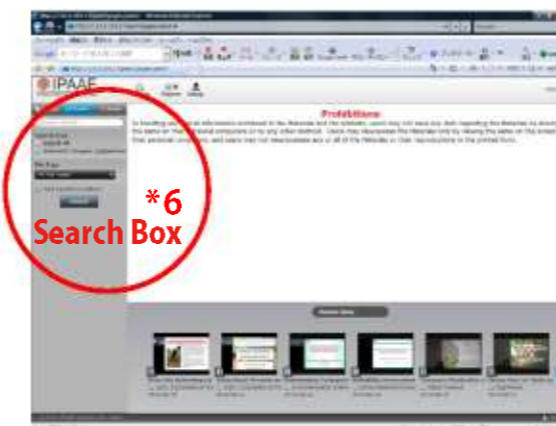
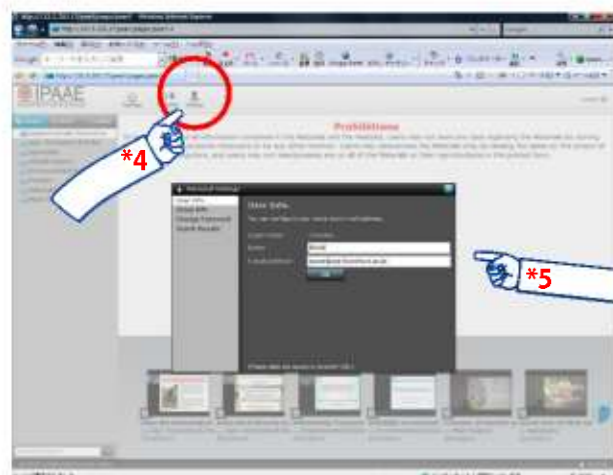
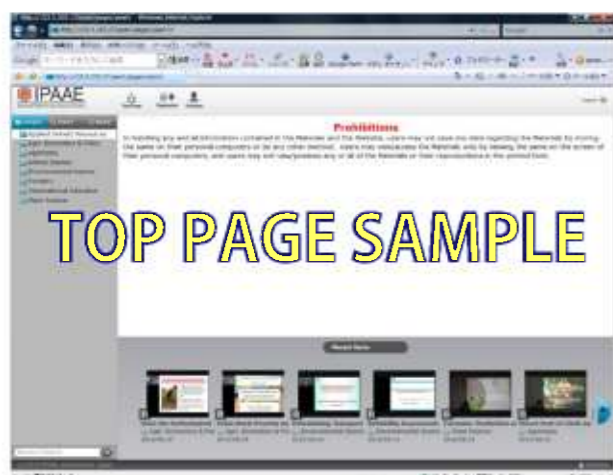
##### 2) Log in.

- ① Go to the IPAAE website (<http://www.agr.kyushu-u.ac.jp/ipaae/>) and click on **e-learning** or go straight to the portal site at <http://133.5.203.17/>.<sup>\*1</sup>
- ② Type in your User ID and Password then click **Login**.<sup>\*2</sup>  
(You can choose English or Japanese as your language on the lower right-hand corner of the page.<sup>\*3</sup>)

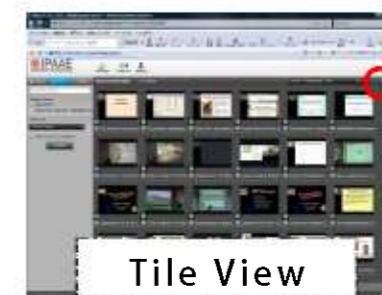
##### 3) Change your password.

For security reasons, we recommend users to change their default password.

- ① First, click on **Settings** shown as <sup>\*4</sup> in the left picture.
- ② Once the "Personal Settings" box<sup>\*5</sup> pops up, proceed to "Change Password", enter your new password, then click **OK**.



Switches between  
Tile View and Ribbon View



#### 4) Simply choose a video by Category or Search by Keyword.\*6

- ① Click on Category and choose a video file.  
or
- ② In the Search Box, type in a keyword(s) such as Name of lecturer, research topic etc., and Select Search Area and File Type if necessary, then click on Search.  
(You can also add Search Condition if searching for a specific title.)  
\*You can view your search results in Tile View or Ribbon View as shown below.

#### 5) Play video.

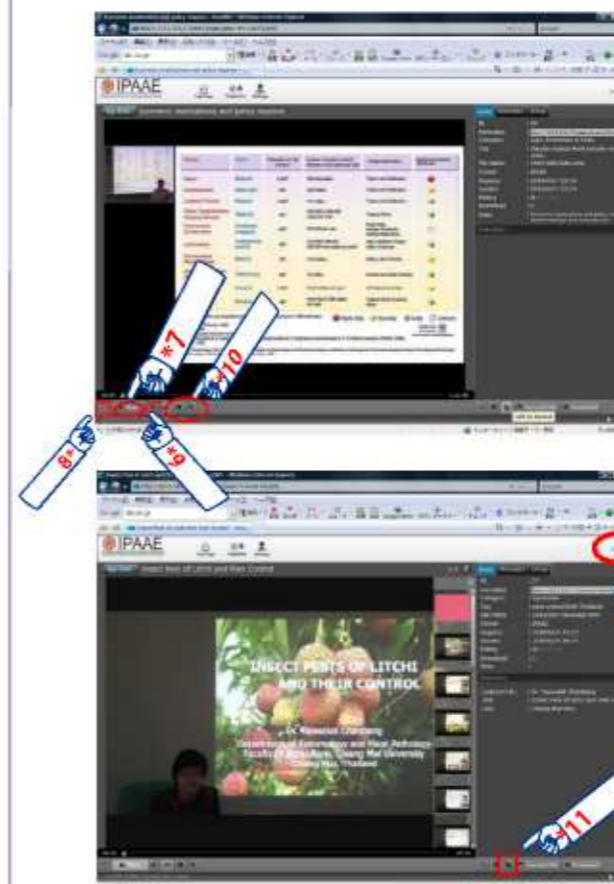
- ① Double-click on the picture (not the title) of the lecture you would like to play.  
It will show a video screen and information on the side as seen in the picture on the left.
- ② Click play to start the video.\*7  
You can watch it in full screen\*8, adjust volume\*9 and scale, or show storyboard on the side.\*10

#### 6) Save as favorite.

- ① Click on "add to Basket" to save as favorite.\*11
- ② You can access your saved videos in the Basket on the top page.

#### 7) Log out.

Click on Logout\*12 and please safely store your User ID and Password.



#### Tips for the portal site use

- It is recommended to use a headset or earphones since the sound quality may be poor in some operating environment.
- Downloading files is strictly prohibited.
- Contributions in terms of quantitatively improving the e-learning contents on the website is very much appreciated, please feel free to add to our collection.
- Please contact us ([ipaae@agr.kyushu-u.ac.jp](mailto:ipaae@agr.kyushu-u.ac.jp)) for inquiries or requests. Any comments for our improvement are also welcome.

Please feel free to contact us if you have any comments.  
We will cover IPAAE activities in the next issue. See you soon!